

CULTURES CONNECTING

DIVERSITY CALENDAR

2024-2025



MISSION STATEMENT

The purpose of this calendar is to address and support the diversity of students, staff, and families in K-12 education settings and beyond. We recognize that by increasing our understanding of diverse cultures, group experiences, traditions, values and beliefs, we can enhance our relationships with one another and hence, create culturally responsive environments where everyone feels valued and respected.

HOW DATES WERE CHOSEN

Due to the extensive number of cultural holidays, dates for this calendar were determined by the following four criteria:

1. Might a student or staff member be absent as a result of this day?
2. Might a student or staff member be disengaged as a result of this day (e.g., hunger or a negative association with a particular day/date such as Thanksgiving, or a day of remembrance of a tragic event)?
3. Might a student, family, or staff member not be able to participate in a school activity during or after school as a result of this day? (e.g., Many of our students do not participate in Halloween or Valentine's Day. There are students, families, and staff who cannot participate in district/school events that are scheduled on the evening of an important religious day observed by the Jewish and Muslim communities).
4. Does the day provide an opportunity for a teachable moment regarding ethnic or cultural diversity that might not otherwise be discussed, particularly dates associated with a continued history of oppression, discrimination, or racism?



WORK IN PROGRESS

We ask for your patience in the event that we have missed important dates that apply to the four criteria above. This was an enormous task taken on by a handful of individuals of good will and intention. If you know of additional cultural holidays that meet the above criteria, or would like to offer suggestions for appropriate websites, books, or other resources that can be used to improve this calendar, please contact: Judy Lee at judy.lee@culturesconnecting.com.

ACKNOWLEDGEMENTS:

This calendar began as a project of Seattle Public Schools. We would like to thank the following contributors that made this Diversity Calendar possible.

SPECIAL THANKS

- Bilingual Instructional Assistants, SPS
- Willard Bill, Jr., Huchoosedah
- Anita Morales, Instructional Services
- Shannon McMinimee, Legal Office
- Keisha Scarlett, STAR Consultant
- Mohamed Roble, Bilingual Community Liaison
- Ilsa Govan, Equity & Race Specialist
- Judy Lee, Cultures Connecting

COMMITTEE MEMBERS

- Caprice D. Hollins, Cultures Connecting
- Hung Pham, Bilingual & Community Liaison
- Shelly Rosen, SPS Parent
- Carl Shutoff, Instructional Technology Resource Teacher



NOTES:

- Starred (*) holy days begin at sunset of the date listed and go to sunset of the following day.
- Caret (^) indicates work restrictions.
- Due to regional and cultural differences, the holidays listed may be celebrated on different dates by individuals of the same faith.
- Many of the holidays are based on actual sighting of the moon and therefore the date may vary.
- For more information on individual holidays, click the holiday title to view its hyperlink (many are linked to Wikipedia).
- Please note that some months have two pages.



AUGUST 2024

Intersectionality Awareness Month



THU 1 Lughnasadh (Lammas)
Neo-Pagan

FRI 9 International Day of the World's Indigenous People
International



MON 12 International Youth Day
International

MON-TUE 12-13 Tisha B'Av *
Jewish

TUE-FRI 13-16 Obon
Japanese Buddhist

MON 19 Raksha Bandhan
Hindu



MON 19 World Humanitarian Day
International

MON 26 Krishna Janmashtami
Hindu

MON 26 Women's Equality Day
United States

Notes:

*Holy days begin at sunset of the date listed and go to sunset of the following day.

SEPTEMBER 2024

Hispanic, Latino, and Latinx Heritage Month



MON 2 Labor Day
United States
No School

WED 11 Enkutatash (New Year)
Ethiopian

SUN - MON 15-16 Eid-e-Milad/ Mawid al-Nabi *
Islam

MON 16 Mexican Independence Day
Mexican

FRI - THU 20-26 International Week of the Deaf
International

SAT 21 International Day of Peace
International



SUN 22 Mabon
Neo-Pagan

MON 23 International Day of Sign Languages
International

MON 30 National Day for Truth and Reconciliation/ Orange Shirt Day
Canadian

Notes:

*Holy days begin at sunset of the date listed and go to sunset of the following day.

OCTOBER 2024



LGBTQ+ History | National Disability Employment Awareness
Filipino American History | Global Diversity Awareness Month

WED-FRI 2-4	Rosh Hashanah * ^ (New Year) Jewish	THU-SAT 3-12	Navaratri/Dussehra * Hindu	FRI-SAT 11-12	Yom Kippur * Jewish Day of Fasting	MON 14	Indigenous Peoples' Day United States
MON 14	Canadian Thanksgiving Canada	WED-WED 16-23	Sukkot * ^ (Feast of Tabernacles) Jewish	WED-FRI 23-25	Shemini Atzeret * ^ Jewish	THU-FRI 24-25	Simchat Torah * ^ Jewish
MON 28	National Immigrants Day United States	THU 31	Halloween ¹ United States	THU-FRI 31-1	Diwali ² Hindu, Jain, Sikh, Buddhist	TUE-WED 31-1	Samhain ³ Neo-Pagan

Notes:

1. Be mindful of costumes. Read our blog about this [here](#).
 2. Diwali is from October 31 to November 1.
 3. Samhain is from October 31 to November 1.
- *Holy days begin at sunset of the date listed and go to sunset of the following day.
^ Work restrictions.

NOVEMBER 2024

Native American and Indigenous Heritage Month



THU-FRI
31-1

Diwali¹ ▲

Hindu, Jain,
Sikh, Buddhist

THU-FRI
31-1

Samhain²

Neo-Pagan

FRI
1

All Saint's Day

Anglican &
Roman Catholic



FRI-SAT
1-2

Día de los Muertos

Mexican

SAT
2

Birth of the Báb * ▲

Bahá'i

SUN
3

Birth of Bahá'u'lláh * ▲

Bahá'i

MON
11

Veteran's Day

United States
No School



FRI
15

Birthday of Guru Nanak

Sikh

THU
28

Thanksgiving Day

United States
No School

THU
28

Day of Mourning

United States
No School

Notes:

1. Diwali is from October 31 to November 1.

2. Samhain is from October 31 to November 1.

*Holy days begin at sunset of the date listed and go to sunset of the following day.

^ Work restrictions.

DECEMBER 2024

Universal Human Rights Month



SUN
8
Feast of the Immaculate Conception
Catholic

THU
12
Day of Our Lady of Guadalupe
Mexican Catholic



MON-TUE
16-24
Las Posadas¹
Latin American

MON-TUE
16-24
Simbang Gabi
Filipino Catholic

THU
18
Bodhi Day (Rohatsu)
Buddhist

FRI
20
Yaldā Night
Persian

SAT
21
Winter Solstice/ Yule
Neo-Pagan

WED
25
Christmas Day
Christian
No School

WED-THU
25-2
Hanukkah²
(Chanukah)
Jewish


THU-WED
26-1
Kwanzaa³
African American

Notes:

1. Las Posadas is celebrated in El Salvador, Mexico, Guatemala, and Honduras on varying dates.
 2. Hanukkah is from December 25 to January 2.
 3. Kwanzaa is from December 26 to January 1.
- *Holy days begin at sunset of the date listed and go to sunset of the following day.

JANUARY 2025




WED-THU
25-2  Hanukkah¹
(Chanukah)
Jewish


THU-WED
26-1 Kwanzaa²
African American

WED
1 New Year's Day
International
No school

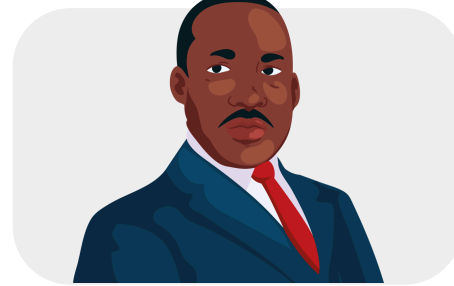


WED
1 Gantan-sai
Shinto 

MON
6 Dia de los Reyes
(Three Kings Day/Epiphany)
Mexican Christian

MON
6 Birthday of Guru Gobind Singh 
Sikh

TUE
7 Orthodox Christmas
Christian
Orthodox



MON
20 Martin Luther King Day
United States
No School

MON
27 Holocaust Remembrance Day
International

WED
29 Lunar New Year³
Asian

Notes:

- 1. Hanukkah is from December 25 to January 1.
 - 2. Kwanzaa is from December 26 to January 1.
 - 3. Lunar New Year is celebrated in China, Korea, Malaysia, Philippines, Indonesia, Singapore, Brunei, and Vietnam.
- *Holy days begin at sunset of the date listed and go to sunset of the following day.
^ Work restrictions.

FEBRUARY 2025

African American History Month



SAT-SUN
1-2 Imbolc
Neo-Pagan

MON
3 Setsubun-sai
Shinto

SAT
1 National Freedom Day
United States

WED
12 Magha Puja Day
Buddhist

FRI
14 Valentine's Day¹
International

MON
17 President's Day
United States
No School

WED
19 Day of Remembrance (Japanese Incarceration)
United States



THU
20 World Day of Justice
International

TUE-WED
25-26 Maha Shivaratri *
Hindu

FRI-SUN
28-30 Ramadan² * ^
Islamic

Notes:

1. Be mindful that not all students observe this holiday.

2. Ramadan is from February 28 to March 30.

*Holy days begin at sunset of the date listed and go to sunset of the following day.

^ Work restrictions.

MARCH 2025

Women's History Month | Developmental Disabilities Awareness Month



FRI-SUN
28-30 * ^
Ramadan¹
Islamic

SAT
1
Black Women's
Equal Pay Day.
United States

WED
5
Equal Pay Day.
United States



WED-THU
5-17
Lenten
Season²
Christian

SAT
8
International
Women's Day.
International

SUN
13
Palm Sunday.
Christian /
Orthodox

THU-FRI
13-14 * ^
Purim
Jewish



THU-FRI
13-14 *
Holi
Hindu

MON
17
St. Patrick's
Day.
Irish



Notes:

1. Ramadan is from February 28 to March 30.

2. Lenten Season is from March 5 to April 17.

*Holy days begin at sunset of the date listed and go to sunset of the following day.

^ Work restrictions.

MARCH 2025

Women's History Month | Developmental Disabilities Awareness Month



WED-THU
19-20

Naw-Rúz *
(Bahá'í
New Year)
Bahá'í

THU
20

Nowruz
(Persian New
Year)
Persian, Iranian

THU
20

Ostara
Neo-Pagan



FRI
21

**International Day
for the Elimination
of Racial
Discrimination**
International

TUE
25

**Int'l Day of
Remembrance of the
Victims of Slavery
and the Transatlantic
Slave Trade**
International

WED
26

**Laylat
al-Qadr**
Islamic

SAT-SUN
29-30

Eid al-Fitr * ^
(End of
Ramadan)
Islamic

MON
31

**César
Chávez Day**
United States

MON
31

**International
Transgender Day
of Visibility**
International,
LGTBQ+ and Allies



Notes:

- *Holy days begin at sunset of the date listed and go to sunset of the following day.
- ^ Work restrictions.

APRIL 2025

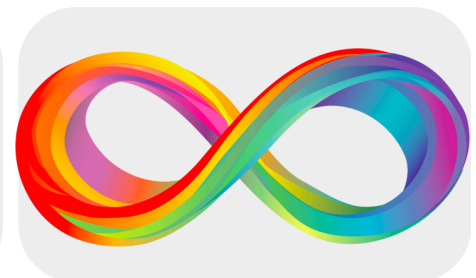


Autism Acceptance Month | Arab American Heritage Month
Celebrate Diversity Month | Holocaust Remembrance Month

WED-THU
5-17
Lenten Season¹
Christian

WED
2
World Autism Awareness Day
International

SUN
6
Rama Navami
Hindu



SUN
6
National Tartan Day
Scottish American

FRI
11
National Day of Silence
United States

THU
17
Maundy Thursday
Christian

SAT-SUN
12-20
Passover (Pesach)
Jewish



SUN-WED
13-16
Bun Pi Mai (New Year)
Laotian

SUN-SAT
13-19
Holy Week
Christian

MON
14
Vaisakhi
Sikh

Notes:

- 1. Lenten Season is from March 5 to April 17.
- *Holy days begin at sunset of the date listed and go to sunset of the following day.
- ^ Work restrictions.

APRIL 2025



**Autism Acceptance Month | Arab American Heritage Month
Celebrate Diversity Month | Holocaust Remembrance Month**

MON-WED
14-16 Cambodian New Year *

Cambodian

FRI
18 Good Friday

Christian

FRI
18 Orthodox Good Friday

Christian Orthodox



SUN
20 Easter

Christian

SUN
20 Orthodox Easter

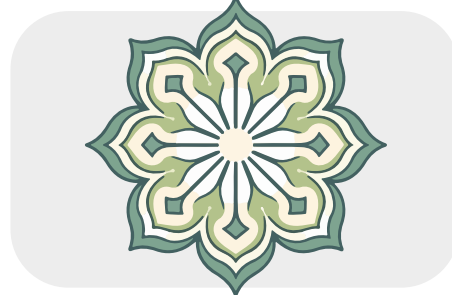
Christian Orthodox

SUN-MON
20-21 First Day of Ridván

Bahá'i

TUE
22 Earth Day

International



WED-THU
23-24 Yom HaSho'ah *

Jewish

MON-TUE
28-29 Ninth Day of Ridván *

Bahá'i

WED-THU
30-1 Twelfth Day of Ridván ¹ *

Bahá'i

Notes:

1. Twelfth Day of Ridván is from April 30 to May 1.

*Holy days begin at sunset of the date listed and go to sunset of the following day.

^ Work restrictions.

MAY 2025

Asian American, Native Hawaiian and Pacific Islander Heritage Month



WED-THU 30-1 <u>Twelfth Day of Ridván</u> ¹ Bahá'í *	THU 1 <u>Beltane</u> Neo-Pagan *	THU 1 <u>May Day (International Worker's Day)</u> International	MON 5 <u>Cinco de Mayo</u> United States / Mexican
SUN 11 <u>Mother's Day</u> United States	SUN 11 <u>El Día de la Madre</u> Mexico, El Salvador Guatemala	SUN 11 <u>Haitian Mother's Day</u> Haitian	MON 12 <u>Buddha Day/ Visakha Puja/ Vesek</u> Buddhist
WED 21 <u>World Day for Cultural Diversity</u> International	THU-FRI 22-23 <u>Declaration of the Báb</u> Bahá'í *	MON 26 <u>Memorial Day</u> United States/ Mexican No School	TUE-WED 27-28 <u>Ascension of Bahá'u'lláh</u> Bahá'í *

Notes:

1. Twelfth Day of Ridván is from April 30 to May 1.

*Holy days begin at sunset of the date listed and go to sunset of the following day.

JUNE 2025

LGBTQ+ Pride Month | National Immigrant Heritage Month
Caribbean American Heritage Month



SUN-TUE
1-3 * ^
Shavuot
Jewish

WED-MON
4-9 *
Hajj
Islamic

FRI-SAT
6-7 *
Eid-ul-Adha
(Feast of Sacrifice)
Islamic



SUN
8
Pentecost
Christian

SUN
8
Día de los Niños¹
Latin American

THU
12
Philippine Independence Day
Filipino

THU
12
Loving Day
United States

THU
19
Juneteenth
United States

FRI
20
Summer Solstice/Litha
Neo-Pagan

THU-FRI
26-25 *
Muharram
(Al Hijrah New Year)²
Islamic

SAT
28
International LGBTQ+ Pride Day
International

Notes:

1. Día de los Niños is celebrated in many Latin American countries including Mexico, Colombia, Chile, Argentina, Bolivia, and Ecuador.

2. Muharram/Al-Hijra is from June 26 to July 25.

*Holy days begin at sunset of the date listed and go to sunset of the following day.

^ Work restrictions.

JULY 2025

Disability Pride Month | BIPOC Mental Health Month



THU-FRI
26-25 Muharram
(Al Hijrah
New Year)¹
Islamic

THU
3 Black Hair
Independence
Day (Crown Day)
United States

FRI
4 Independence
Day
United States

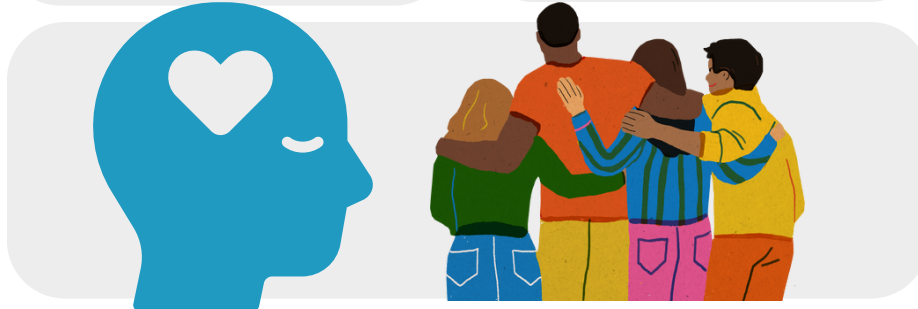


WED
9 Martyrdom
of the Báb
Bahá'í

THU
10 Dharma
Day
Buddhist

SUN
13 17th of
Tammuz
Jewish

MON
14 International
Non-Binary
People's Day
International



WED
23 Birthday
of Haile
Selassie
Rastafarian

SAT
26 National
Disability
Independence
Day
International

Notes:

1. Muharram/Al-Hijra is from June 26 to July 25.

*Holy days begin at sunset of the date listed and go to sunset of the following day.

^ Work restrictions.